

Reliability, energy savings, low noise, solutions...



Reliability, energy savings, low noise and vibration levels, air-cooled or with closed-circuit water cooling .

Flow rates from 2.5 lpm (0.15 m<sup>3</sup>/h–5.4 SCFH) to more than 750 lpm (45 m<sup>3</sup>/h–1,600 SCFH).



Output pressure up to 380 bar/5,700 PSI, depending upon the model.

Compressors can be provided to meet your requirements for flow, pressure, etc



**Applications :**

Chemical processes  
Industrial processes  
Filling high pressure cylinders  
Filling diving tanks  
Powering medical tools  
Pressurizations of pipes  
And more uses

CONVENIENT

RELIABLE

SAFE

ECONONOMICAL



ORION GROUP INTERNATIONAL INC.

2124 NE 123<sup>rd</sup> St

Miami, FL 33181, USA

Ph. +1 305 892-7888

Fax +1 305 892-7228

[www.oriongroupintl.com](http://www.oriongroupintl.com)

## HIGH PRESSURE COMPRESSORS

**HPO – 300/600**

### Features and benefits:

#### Oil Less:

No grease or oil is used in the compression chamber. The system design insures that this potential contaminants cannot enter in the chamber from others parts of the mechanism.

#### Control:

Control panel displays operating conditions including: overheating -protection circuit, time recorder, leak-protection system, pressure gauges at input, at each stage and output, safety valves at each stage, etc .

#### Special features:

Dynamic and statically balanced, inter stages buffers tanks to absorb shock, reducing the vibration and noise typical of high pressure compressors. No floating pistons, we use direct drive pistons made of stainless steel resulting in greater useful life and less maintenance. We not use Halocarbons oils.

#### Compatibility:

The system can compress a variety of high-purity gases including oxygen, nitrogen and argon.

**NOTE:** The system is not designed for use with explosive gases, we have a different design for this.

#### Low cost of operation:

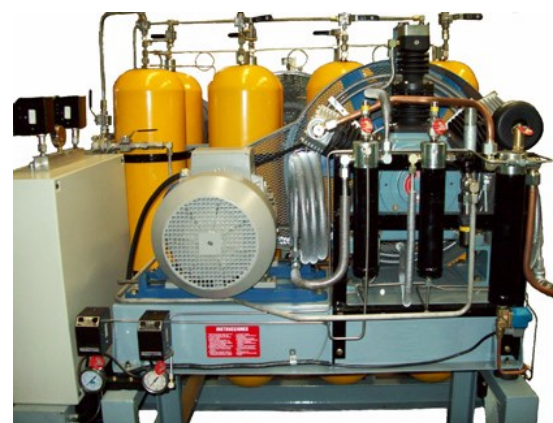
Owing to the complex design of the compression seals, dynamic balance and overall design, periods between routine maintenance are longer and energy consumption is less than for other compressors with similar output characteristics

#### Reliable:

Our compressors have been operating for more than 10 years in nuclear power stations and uranium-processing laboratories. Our compressors drive instrumentation at oil wells in remote parts of the world .

### TECHNICAL CHARACTERISTICS

Compression Stages	3	
Number of cylinders	3 in W	
Inlet pressure	1,5 - 3 Bar	22 - 44 PSIG
Outlet pressure	206 Bar	3,000 PSIG
Estimated weight	125 Kg	275 Lbs
Dimensions mm/inch	960-500-500	37.8- 19.9—19.9
Flow HPO-300 @ 3 Bar	8,4 m <sup>3</sup> /h	300 SCFH
Motor power	3 HP	
Flow HPO-600 @ 3 Bar	16.9 m <sup>3</sup> /h	600 SCFH
Motor power	5,5 HP	
Estimated weight	148 Kg	325 lbs



Special HPO-600 for Scuba use.  
Output pressure 330 bar/4.785 PSIG



**ORION GROUP INTERNATIONAL INC.**

2124 NE 123<sup>rd</sup> St

Miami, FL 33181, USA

Ph. +1 305 892-7888

Fax +1 305 892-7228

[www.oriongroupintl.com](http://www.oriongroupintl.com)